

FROZEN PIPES?

Quick Tips for Safe Cooling Tower Startup after the Thaw

VISUALLY INSPECT

Check for damage to pipes, makeup floats, and check the hot deck for damage to nozzles from freezing.

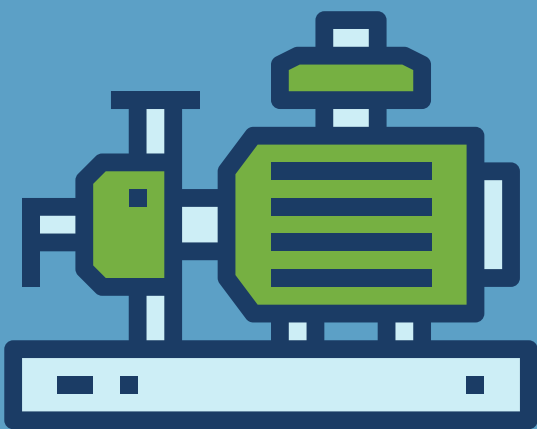


START UP SLOWLY

Makeup water one tower at a time, checking for leaks as you go. If you spot leaks, shut down and call your mechanical contractor or plumber

CHECK FOR BLOCKAGES

Once flow is established, check the hot deck and fill for blockages. There could be lingering ice in the shady spots that can break off and block flow.



INSPECT YOUR TREATMENT EQUIPMENT

Check your chemistry controller and pumps for proper operation. Inspect feed tubing for brittle sections or leaks. Call Earthwise to help get your operations back on track.

GOT DAMAGE? CALL YOUR EARTHWISE REP
OR OUR OFFICES AT 855-868-8809



SHARED BY: KEITH HOPSON, SENIOR ACCOUNT MANAGER
HOUSTON TX

Read more at
earthwiseenvironmental.com